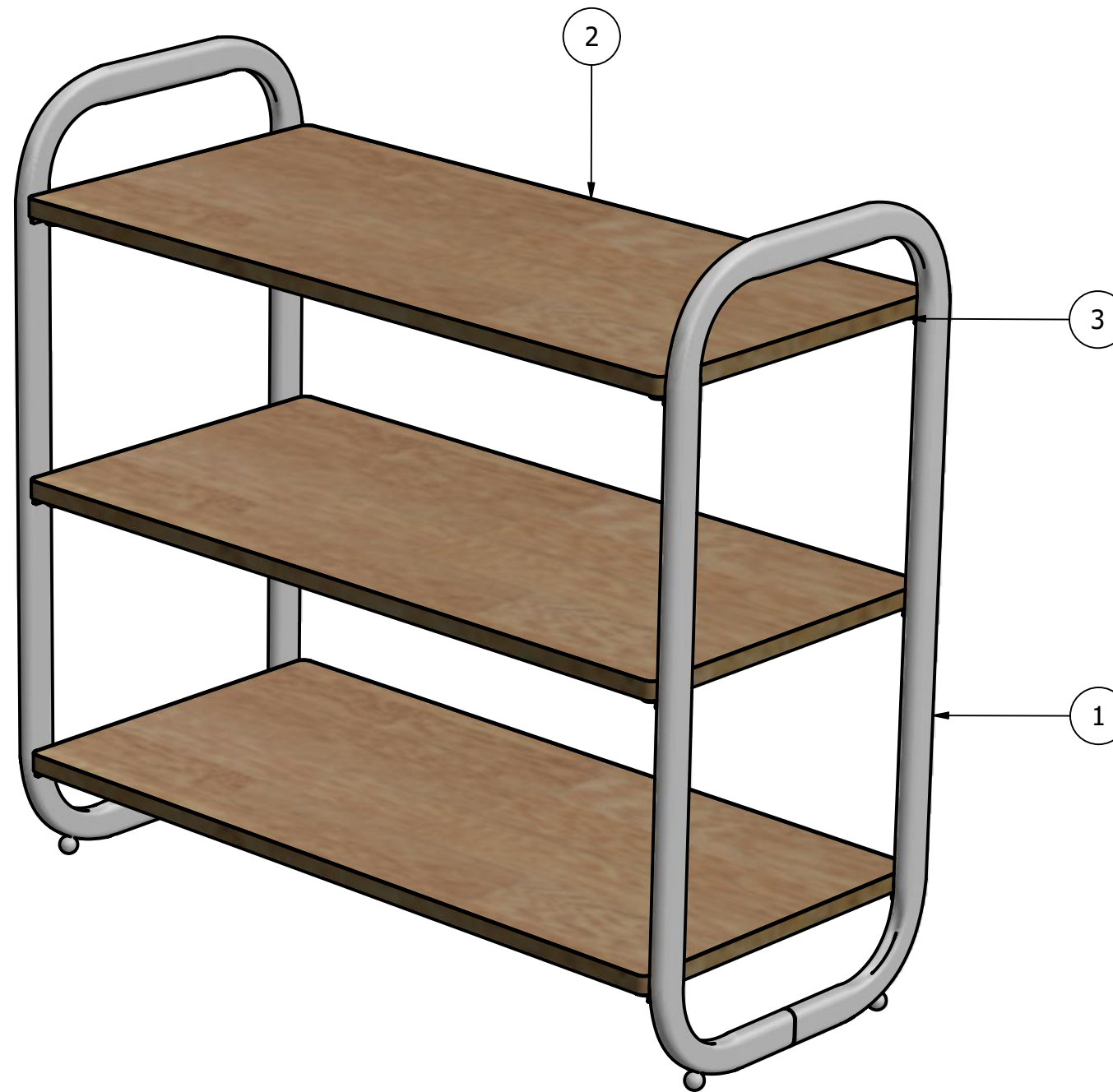


5047-9979 RETRO STORAGE SHELF



PARTS LIST			
ITEM	REF#	QTY	DESCRIPTION
1	F10322	2	Frame
2	F10323	3	Shelf
3	F10324	12	Hex Screw

REVISION HISTORY			
REV	DESCRIPTION	DATE	APPROVED

GENERAL NOTES

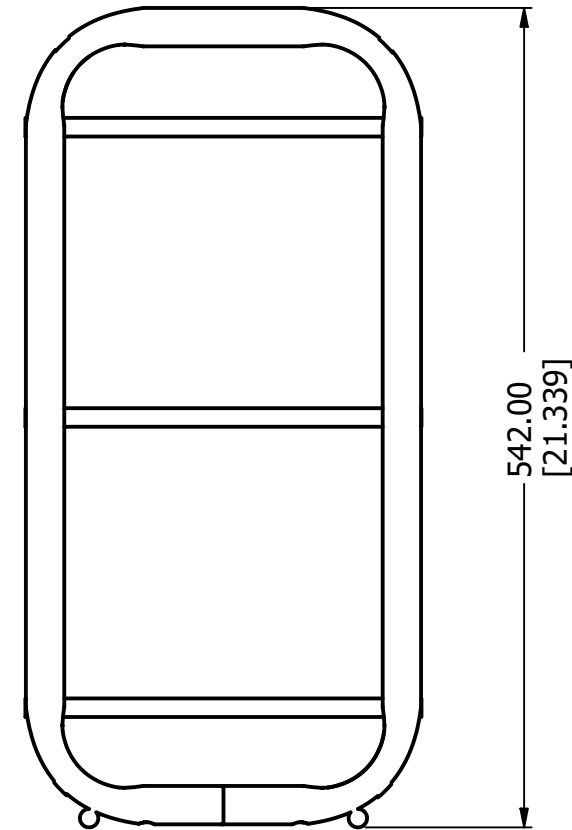
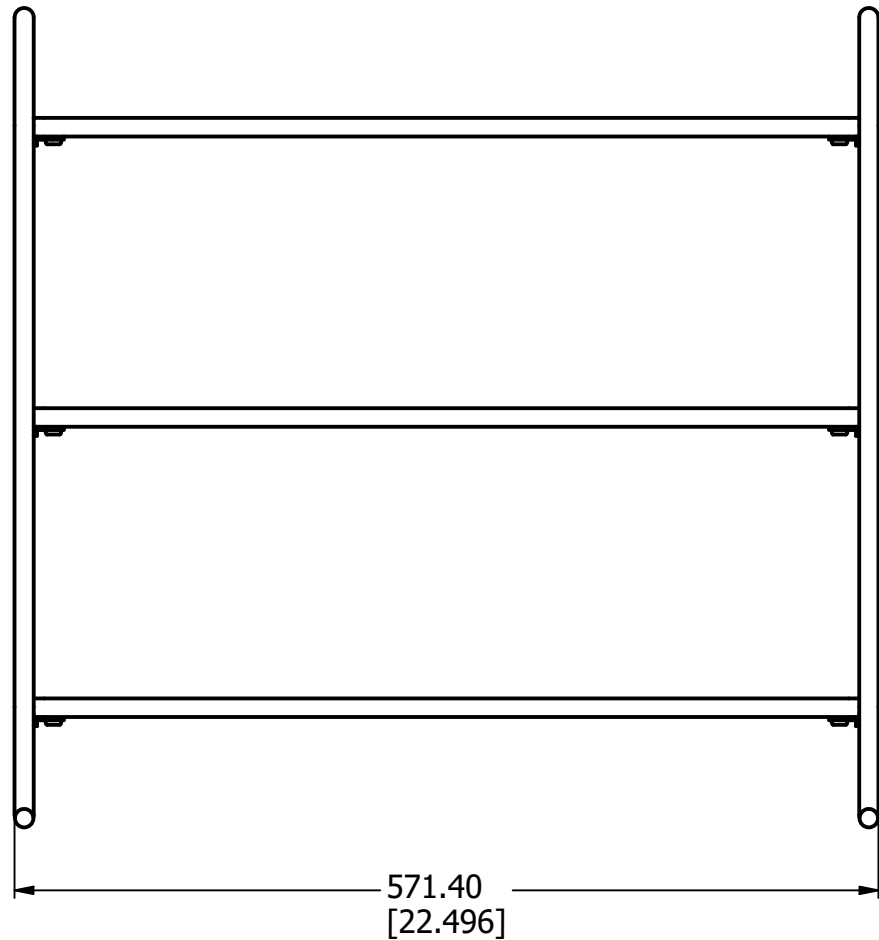
► Construction Options



CONFIDENTIAL: disclosure to any third party, firm, corporation or association is not permitted without the prior authorization of Whitmor.

WEIGHT	4.553 kilogram	10.037 pound	DESCRIPTION	Drawing Unit	Drawn By	Approved By
MATERIAL	MATTE WHITE & CHROMED STEEL & PARTICALBOARD W/LAMINATE		RETRO STORAGE SHELF	Metric	dwight.jones	
OVERALL DIM.	571.40mm (22.496in) L	262.00mm (10.315in) W	ITEM NUMBER	Drawing Number	REV Date	
TOLERANCE	SCALE 1 : 4		5047-9979	01	01/16/2020	
					REV #	0

5047-9979 RETRO STORAGE SHELF



REVISION HISTORY

REV	DESCRIPTION	DATE	APPROVED

GENERAL NOTES

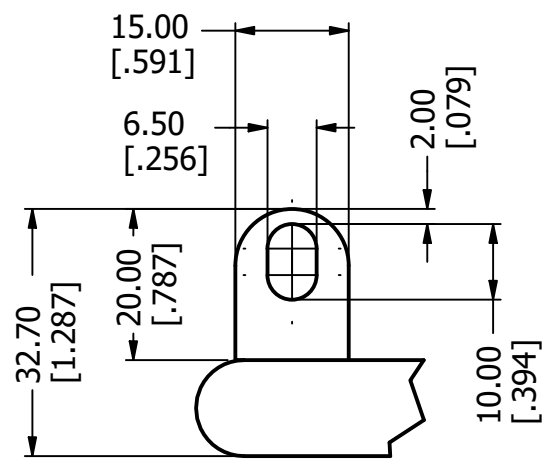
- Construction Options



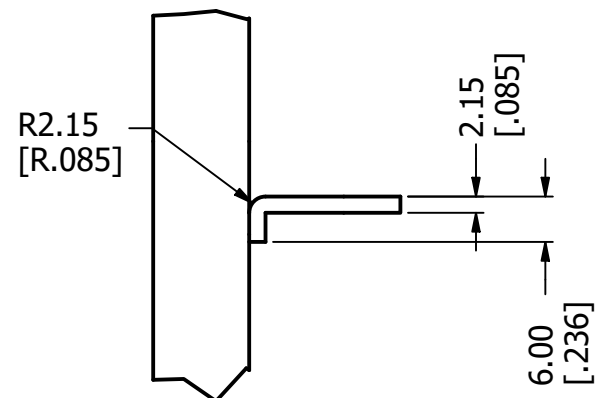
CONFIDENTIAL: disclosure to any third party, firm, corporation or association is not permitted without the prior authorization of Whitmor.

WEIGHT	4.553 kilogram	10.037 pound	DESCRIPTION	Drawing Unit	Drawn By	Approved By
MATERIAL	MATTE WHITE & CHROMED STEEL & PARTICALBOARD W/LAMINATE		RETRO STORAGE SHELF	Metric	dwight.jones	
OVERALL DIM.	571.40mm (22.496in) L	262.00mm (10.315in) W	ITEM NUMBER	Drawing Number	REV Date	REV #
TOLERANCE	SCALE 1 : 5		5047-9979	02	01/16/2020	

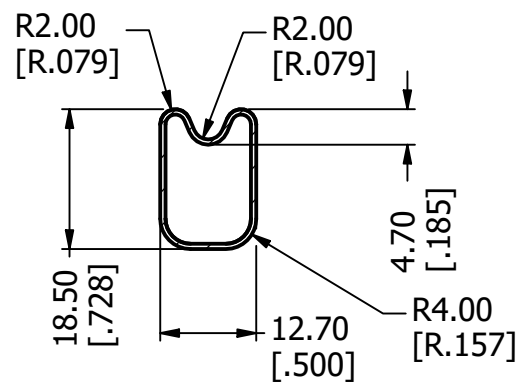
5047-9979 RETRO STORAGE SHELF



DETAIL A
SCALE 1 : 1

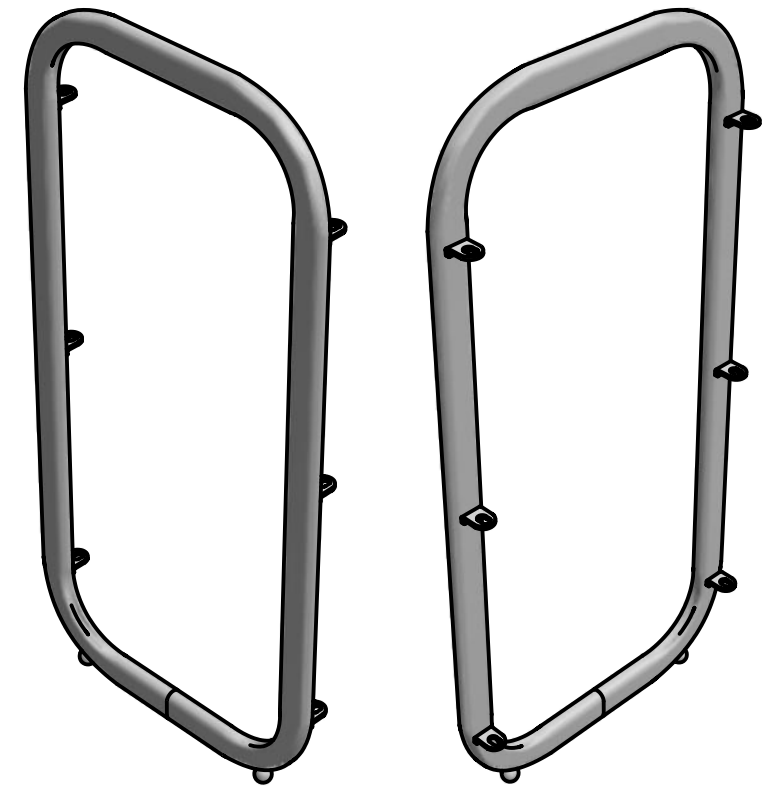
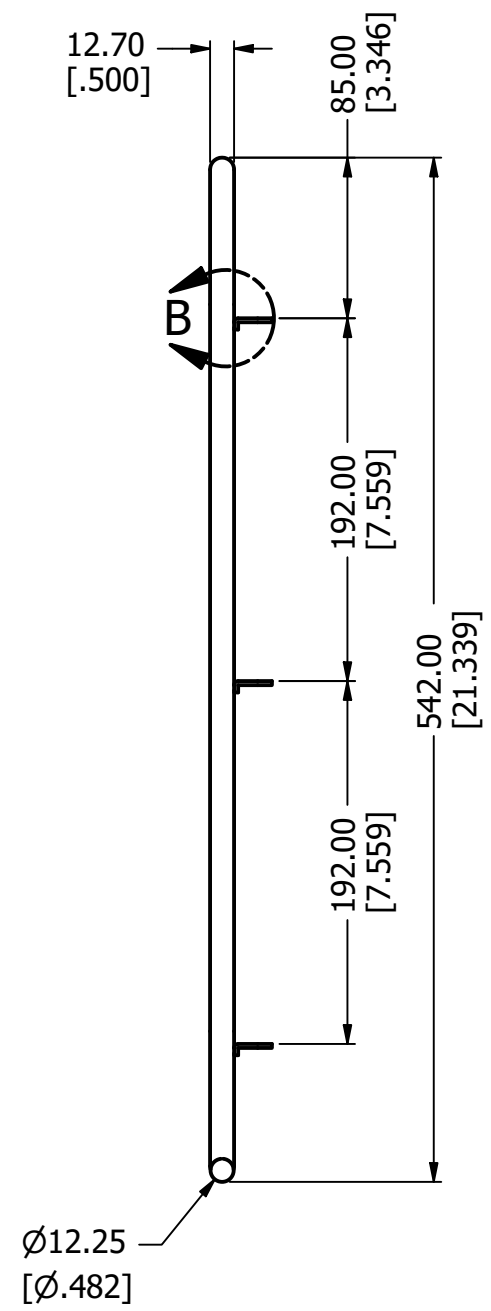
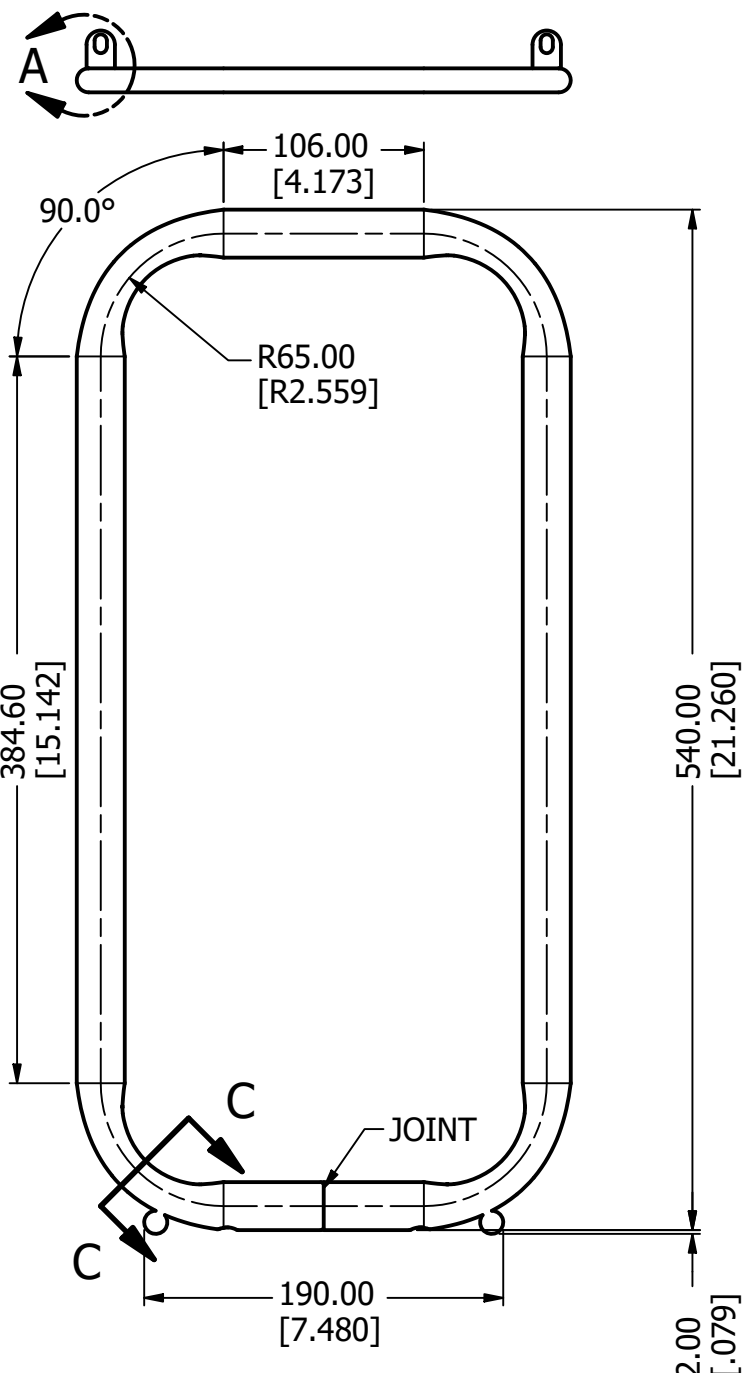


DETAIL B
SCALE 1 : 1



SECTION C-C
SCALE 1 : 1

2 X Ø4.00 THRU ONE WALL
[Ø.157]



REVISION HISTORY

REV	DESCRIPTION	DATE	APPROVED

GENERAL NOTES

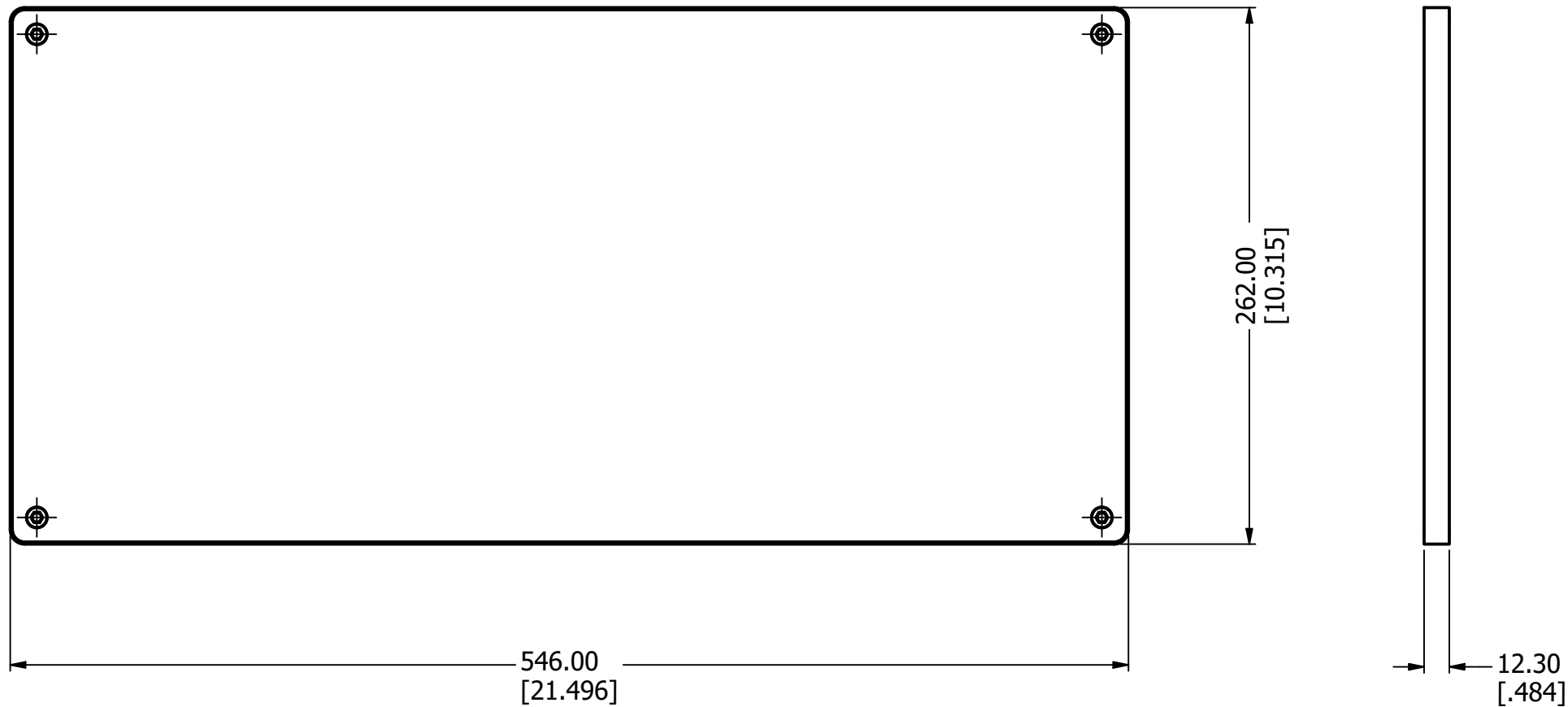
- Construction Options
- WALL THICKNESS TOLERANCE: ± 4%
- MATTE WHITE COATING TOLERANCE: 185µ MICRONS ±20µ



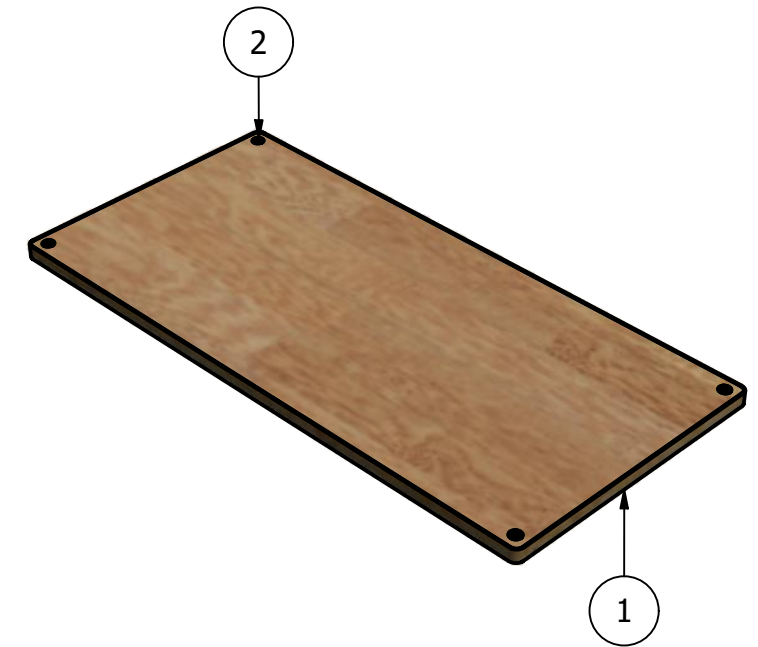
CONFIDENTIAL: disclosure to any third party, firm, corporation or association is not permitted without the prior authorization of Whitmor.

WEIGHT	0.442 kilogram	0.975 pound	DESCRIPTION	Drawing Unit	Drawn By	Approved By
MATERIAL	MATTE WHITE COATED STEEL		FRAME	Metric	dwight.jones	
OVERALL DIM.	261.40mm (10.291in) L	32.70mm (1.287in) W	ITEM NUMBER	Drawing Number	REV Date	REV #
TOLERANCE	SCALE 1 : 4		F10322	03	01/16/2020	

5047-9979 RETRO STORAGE SHELF



PARTS LIST		
ITEM	QTY	DESCRIPTION
1	1	Shelf
2	4	Threaded Metal Insert



REVISION HISTORY			
REV	DESCRIPTION	DATE	APPROVED

GENERAL NOTES

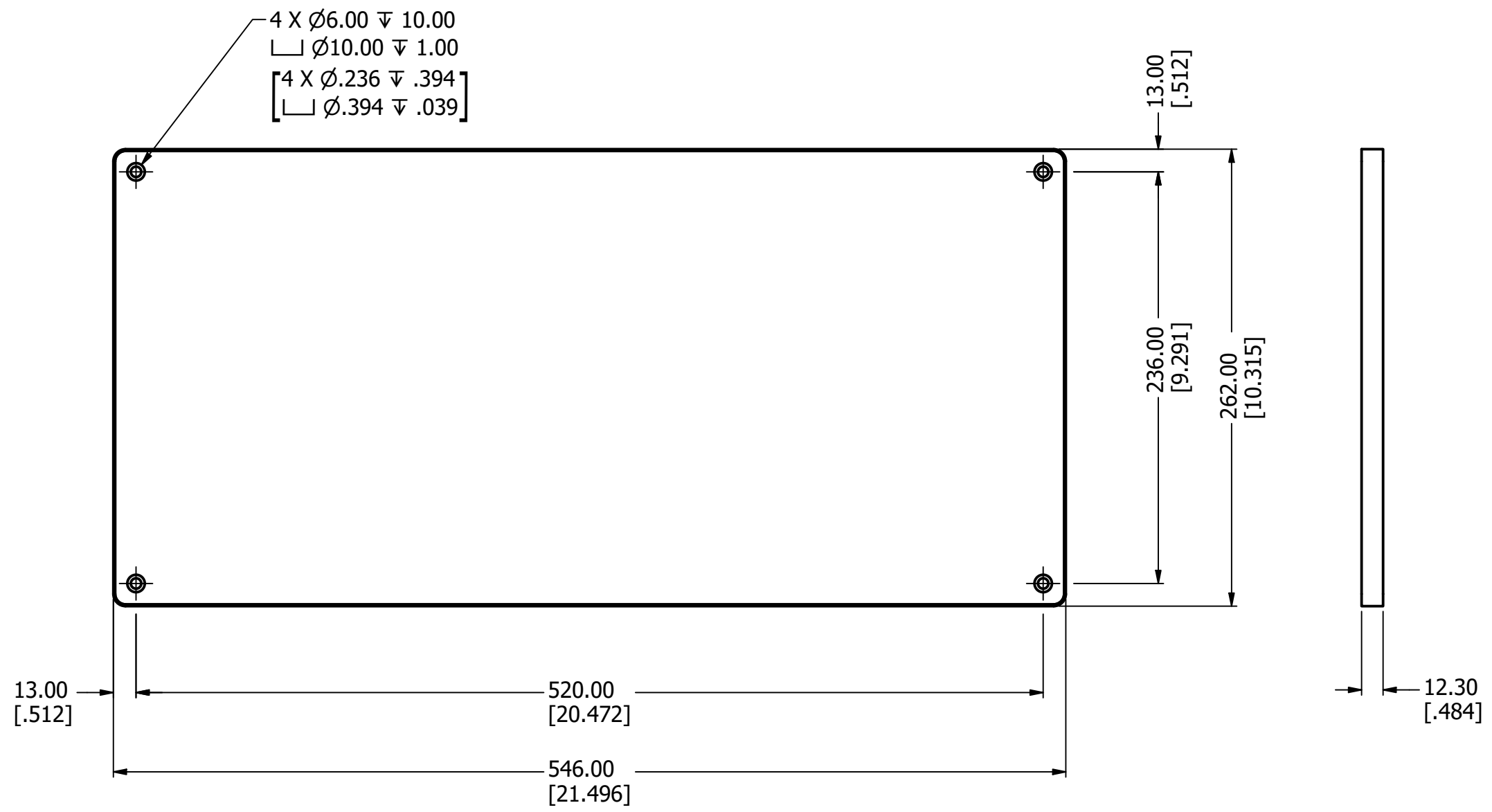
- Construction Options



CONFIDENTIAL: disclosure to any third party, firm, corporation or association is not permitted without the prior authorization of Whitmor.

WEIGHT	1.212 kilogram	2.672 pound	DESCRIPTION	Drawing Unit	Drawn By	Approved By
MATERIAL	PARTICLE-BOARD/LAMINATE & STEEL		SHELF	Metric	dwight.jones	
OVERALL DIM.	546.00mm (21.496in) L	262.00mm (10.315in) W		ITEM NUMBER	Drawing Number	
TOLERANCE	SCALE 1 : 3		F10323	04	REV # 0	

5047-9979 RETRO STORAGE SHELF



REVISION HISTORY

REV	DESCRIPTION	DATE	APPROVED

GENERAL NOTES

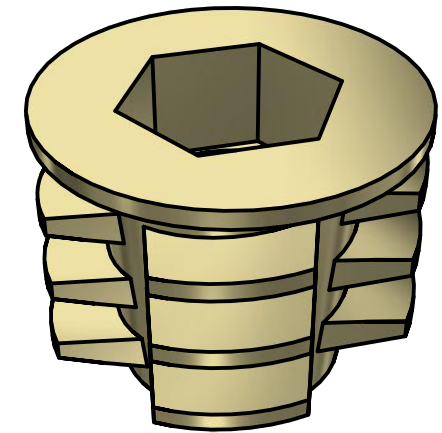
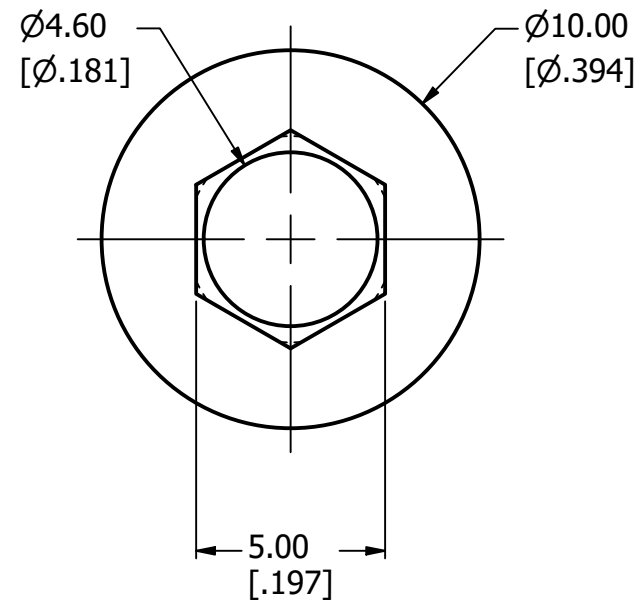
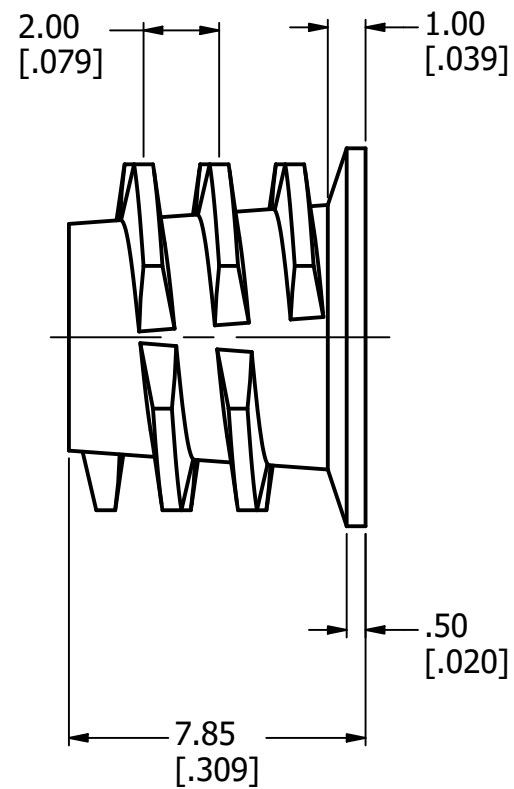
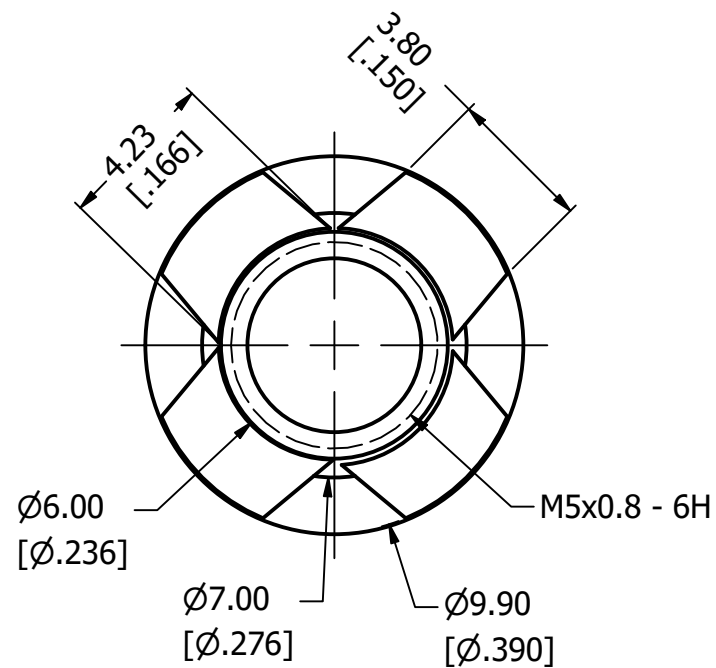
- Construction Options



CONFIDENTIAL: disclosure to any third party, firm, corporation or association is not permitted without the prior authorization of Whitmor.

WEIGHT	1.210 kilogram	2.668 pound	DESCRIPTION	Drawing Unit	Drawn By	Approved By
MATERIAL	PARTICLE-BOARD/LAMINATE & STEEL		SHELF	Metric	dwight.jones	
OVERALL DIM.	546.00mm (21.496in) L	262.00mm (10.315in) W	ITEM NUMBER	Drawing Number	REV Date	REV #
TOLERANCE	SCALE 1 : 3		-	05	01/16/2020	

5047-9979 RETRO STORAGE SHELF



REVISION HISTORY

REV	DESCRIPTION	DATE	APPROVED

GENERAL NOTES

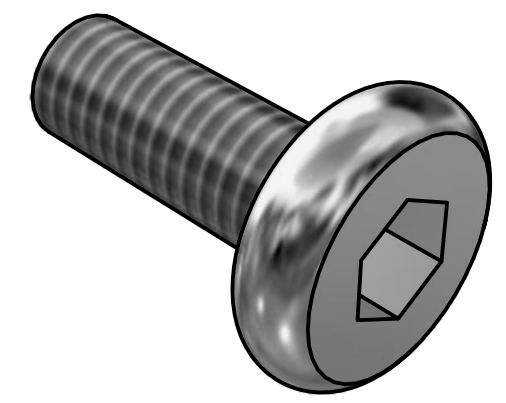
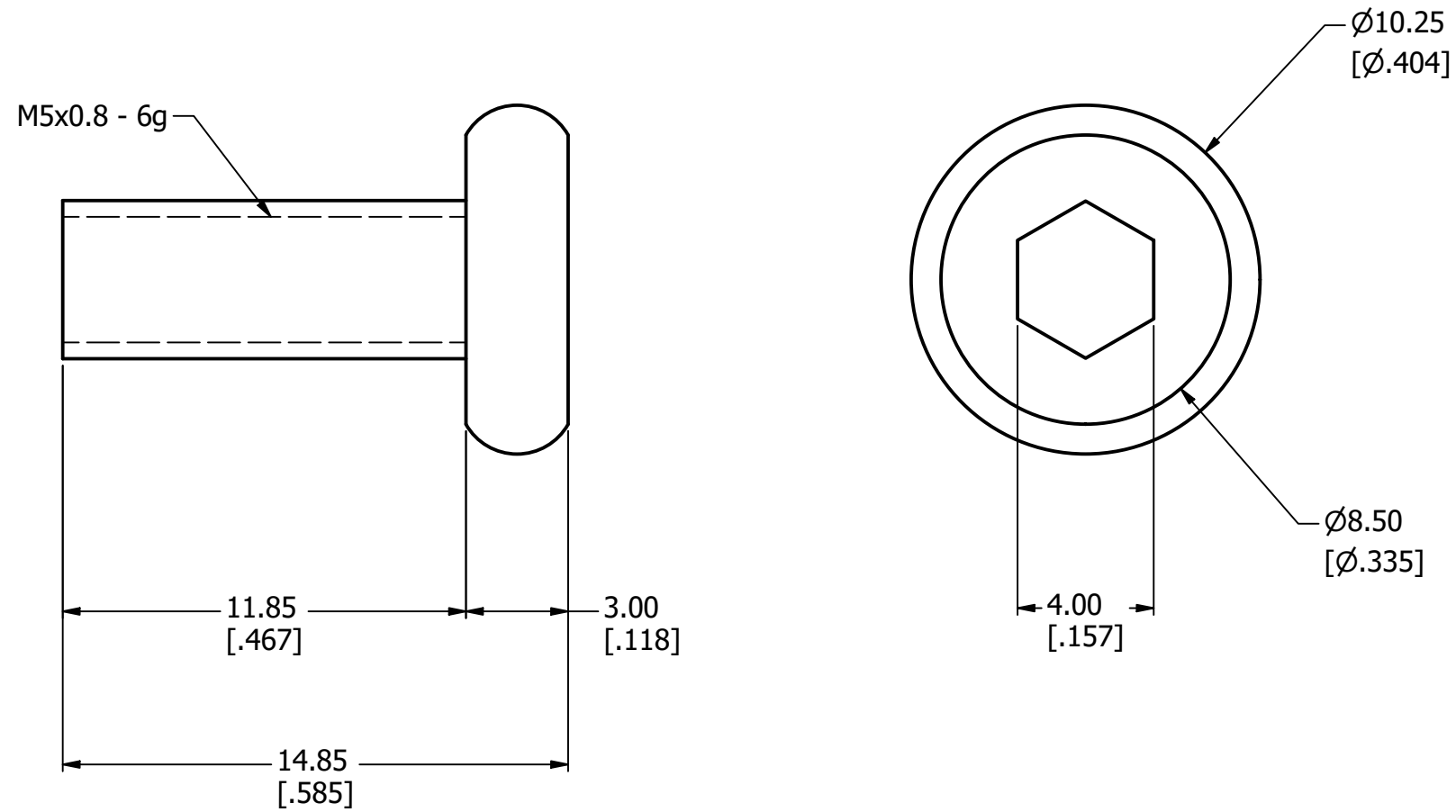
- Construction Options



CONFIDENTIAL: disclosure to any third party, firm, corporation or association is not permitted without the prior authorization of Whitmor.

WEIGHT	0.000	kilogram	0.001	pound	DESCRIPTION	Drawing Unit	Drawn By	Approved By
MATERIAL	STEEL				THREADED METAL INSERT M5	Metric	dwight.jones	
OVERALL DIM.	7.85mm (0.309in)	L	10.00mm (0.394in)	W	ITEM NUMBER	Drawing Number	REV Date	REV #
TOLERANCE			SCALE	5 : 1	-	06	01/16/2020	

5047-9979 RETRO STORAGE SHELF



REVISION HISTORY

REV	DESCRIPTION	DATE	APPROVED

GENERAL NOTES

- Construction Options



CONFIDENTIAL: disclosure to any third party, firm, corporation or association is not permitted without the prior authorization of Whitmor.

WEIGHT	0.003	kilogram	0.006	pound	DESCRIPTION HEX SCREW	Drawing Unit Metric	Drawn By dwight.jones	Approved By
MATERIAL	CHROMED STEEL						ITEM NUMBER F10324	
OVERALL DIM.	14.85mm (0.585in)	L	10.25mm (0.404in)	W	10.25mm (0.404in)	H		
TOLERANCE	SCALE 4 : 1							